

LEARN FOUNDATION

Watch Video:
<http://www.airbrushmakeup.com/howto/dvd/best-tips/>



Hand Position1

LESS ↔ MORE

Rocking the lever regulates the release of water into the air stream. Practice rocking the lever back and forth to slightly release small amounts of coverage. You get the best result when it barely feels cool when it touches your skin.

Water First!2

Try water first. Put a few drops of water into the makeup cup. This is where you will, in a short time, be adding and even mixing makeup colors. Use water first to practice, then try makeup and continue to practice.

Distance For Foundation3

The Distance Guide swab will help you to rehearse holding the tip of the airbrush the correct distance from the face. It adjusts from about 1" out to 5".

Move before You Spray4

1. Start moving the airbrush with your whole hand and arm do not flex at the wrist. **2.** Then lightly start to spray water/makeup. **3. The more lightly you spray,** the more even the coverage. Water practice: Hold the airbrush 5-6 inches from your arm, feel the cool continuous air flow. Now pull back on the lever and spray. Notice how the water/ makeup spray feels cooler than just air.

“Less is More” Bands5

The training bands will teach you how far back to rock the lever. Practicing with these training bands will help you to quickly develop a more delicate touch for better and faster results.

Flutter The Lever6

Fluttering the lever gives you better control over how much makeup is coming out

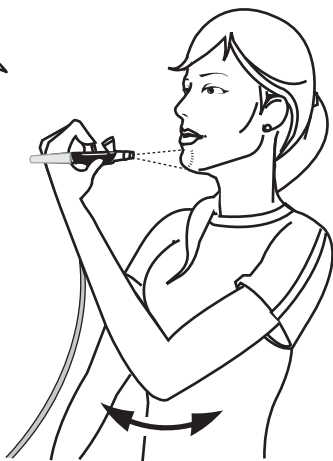
A Range for shadow, liner & blemishes.
B Range for Blush, Lips and eye makeup.
C Range for Foundation.

Rhythmic Rocking Motion

7

I'm moving my whole arm in a circular or elliptical motion for a basic foundation coverage.

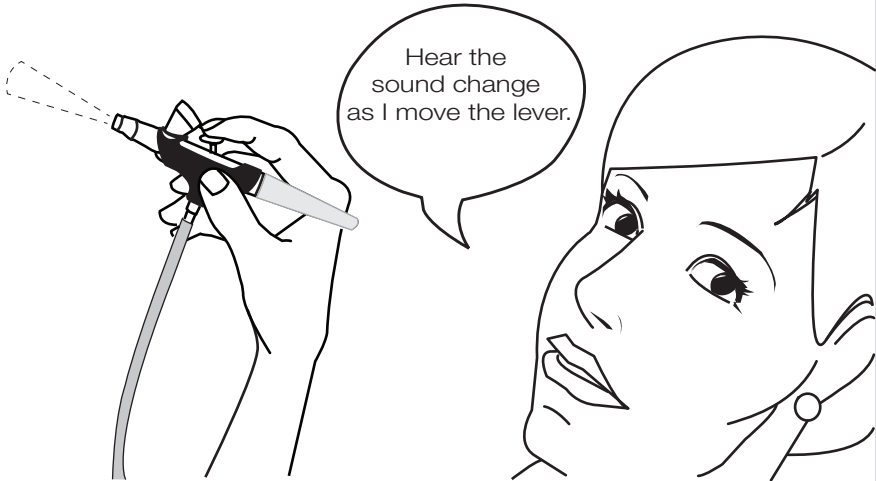
- 5-6" Foundation (week 1)
- 3-4" Blush (week 2)
- 1-2" Eyeshadow, Lips, Eyeliner (week 3)



Move the brush and arm in a gentle swift motion. While moving the airbrush, gently see-saw back on the lever till you feel the cool mist of water gently touch your face. Getting too close can cause wet, excess coverage (known as "hot spots").

Listen to Spray Sound

8



You can hear when you are spraying lightly and when you are spraying too much.

Watch for Change

9

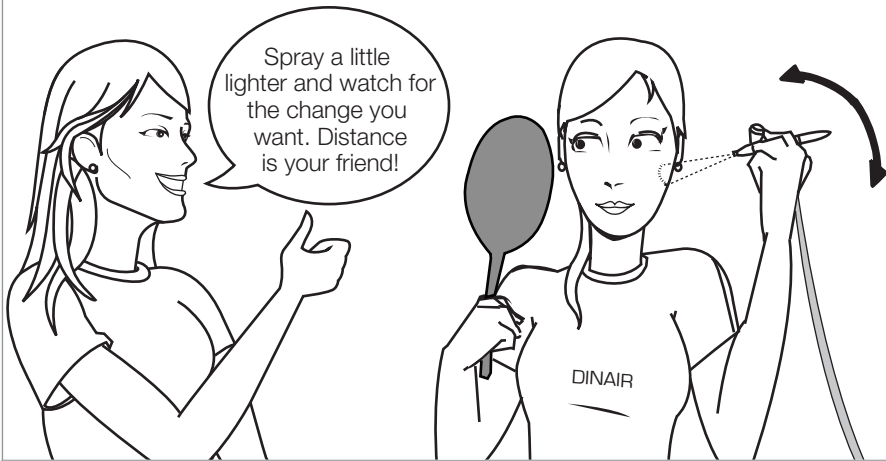


Listen, feel and watch for a small amount of change. Watch for the change, not the makeup to appear. The more you watch for change, the better your makeup results will be.

- Empty out water before putting makeup into airbrush.
- Water will compromise the special long lasting qualities of the makeup.

Practice With A Friend

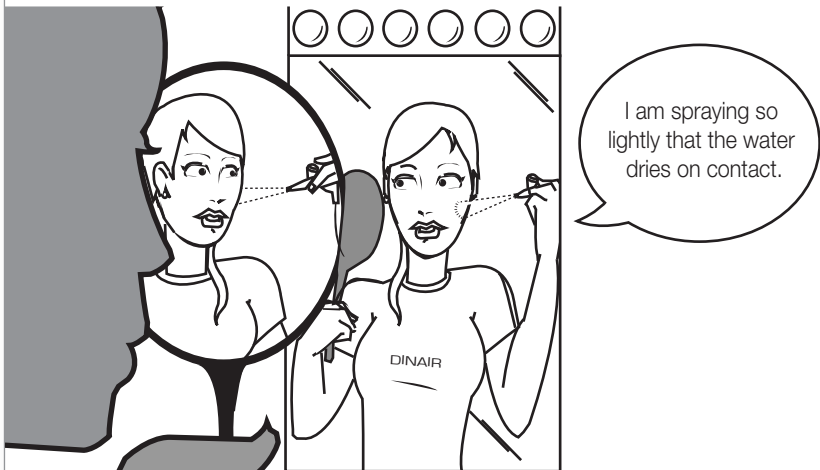
10



Practice keeping your airbrush spacing at the right distance using a hand mirror or better yet let a friend help. You are welcome to call our Customer Care at Dinair, for help and questions. We can assist you over the phone or skype.

It Dries On Contact

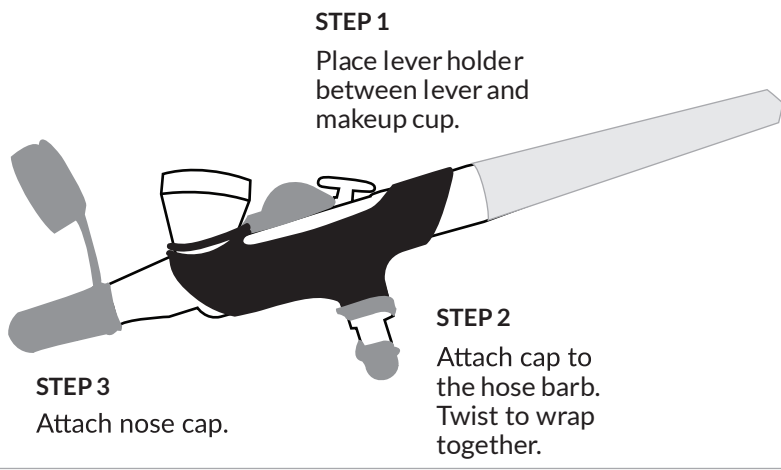
11



Two mirrors allow you to really analyze and understand how Dinair Airbrush works. Make sure to spray light refreshing passes so that both water/makeup dries/sets on contact.

Cleaning

12



- Step 4: Add cleaner to the makeup cup.
- Step 5: Squeeze the nose tip several times to circulate cleaner.
- Step 6: Attach cap to makeup cup.

NEED HELP?

For More Tips, Call or Visit Us Online!
AirbrushMakeup.com | 800.785.4770 | help@dinair.com

We are here to help!

LEARN ONLINE
AIRBRUSHMAKEUP.COM/EASY

